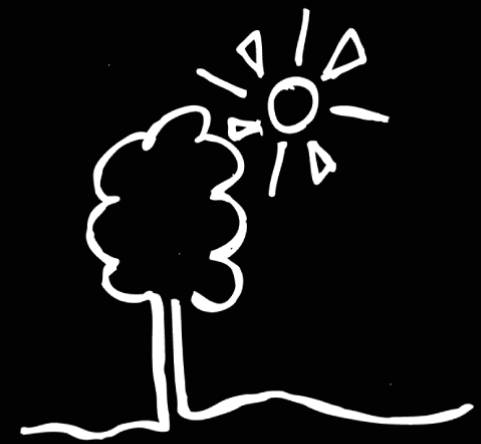


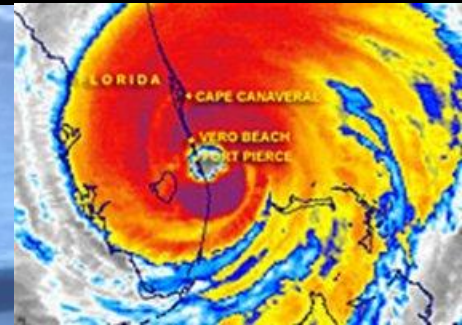
[Globaltrees.co.uk](http://Globaltrees.co.uk)

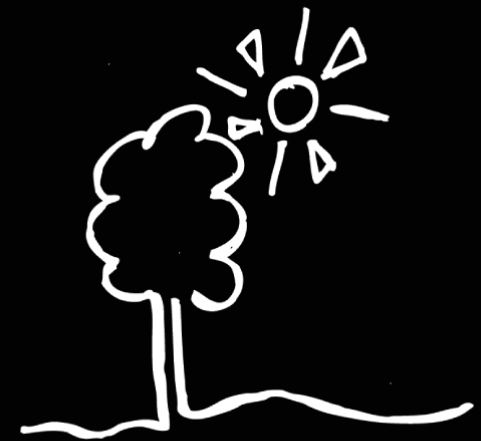
**Help Reverse Global Warming**



[Globaltrees.co.uk](http://Globaltrees.co.uk)

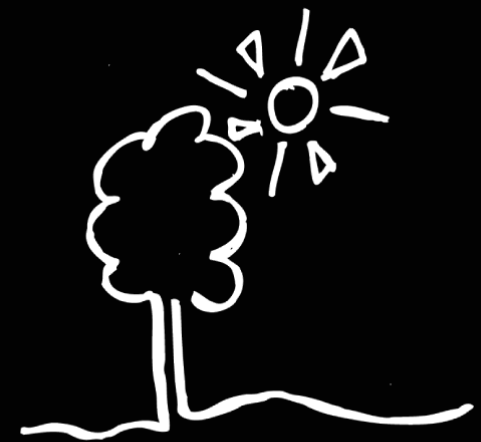
It seems strange to say it at the moment,  
but this is the  
**No.1 long term issue we face**





**Globaltrees.co.uk**

- Some facts on Global Warming
  - All we can do is slow it down
  - Drought, storms, floods will be more prevalent
  - Diseases will spread
  - Climates will become more extreme



**Globaltrees.co.uk**

- The earth is already warmer
- If we do nothing by 2050-
  - Up to 200 million people could become refugees through flooding or drought
  - 2 degree centigrade rise – 40% of species could be faced with extinction
  - Global economies could shrink by 20%

Sources: Michael Fish, meteorologist, climate expert and board member of Global Trees and The Stern Report

# Global Trees ...who?



- Charitable status in the UK
- 95% of donations goes directly into planting
- Trees are planted for 56 pence in the UK – approx 3.5 dirhams per tree
- Only planted in areas where international standards for sustainability apply
- Planting trees in the UK, but also projects in Cameroon and Cambodia

# The board of trustees



- To help achieve aims
- Complimenting skills
- To build sustainability



The Woodland Trust

**We need what help we can get**

# A two step approach to climate change



# Emissions .....reduction



## reduce, reuse, recycle

- Don't leave things on standby
- Reduce travel
- Food miles – buy local, less packaging

## Businesses

- Product Management
- Everyday energy efficiency savings
- Transport
- Think global, buy local
- Introduce innovative working practices

# Trees .....the facts



- The most efficient way of removing CO<sub>2</sub>
- Forests account for 80% of CO<sub>2</sub> exchange
- Global Trees work on average figure of 5.88 trees to offset one tonne of CO<sub>2</sub>
- In the UK the average person has a carbon footprint of between 10 and 12 tonnes per year
- The average person can therefore offset their carbon footprint for aed250 per year, or **20.5 dirhams per month**

Sources: Global Trees, The Royal Society, Dr Charles Russell and The Central Scotland Forest Trust

# Global Trees the contacts



- [www.unfccc.int](http://www.unfccc.int) – a great source of information about Kyoto protocol and UN climate change work
- [www.ipcc.ch](http://www.ipcc.ch) – the site of the Intergovernmental Panel on Climate Change
- [www.ceres.org](http://www.ceres.org) – an interesting take on investment management promoting sustainability and climate change work
- [www.ghgnetwork.org/section/resources](http://www.ghgnetwork.org/section/resources) – the Greenhouse Gas Experts Network's list of very useful resources
- [www.celsias.com](http://www.celsias.com) – a fantastic information-sharing site
- [www.ert.net](http://www.ert.net) – the Environmental Resources Trust site: using market forces to protect the environment!



**Ask not what the world can do for you;  
Ask what you can do for it\***

**REDUCE & PLANT**

\* Acknowledging John F Kennedy inauguration speech